

Power BI

2019 release wave 2
October 2019-March 2020

In this guide, you will be able to learn the most important things about this release wave. These will help you plan to onboard the release updates with confidence.

Top things to know

New capability highlights

The **2019 release wave 2**, brings to market significant new capabilities to enable digital transformation for businesses. For Power BI, these new capabilities include:

Unified platform for enterprise BI

- Data Protection (Preview)
- Shared and Certified Datasets
- Data lineage capabilities (Preview)
- Open platform connectivity (XMLA Read/Write) (Preview)
- Datasets larger than 10GB in Power BI Premium (Preview)
- Admin usage metrics
- Unattended Power BI template app installation

Self-service analytics for everyone

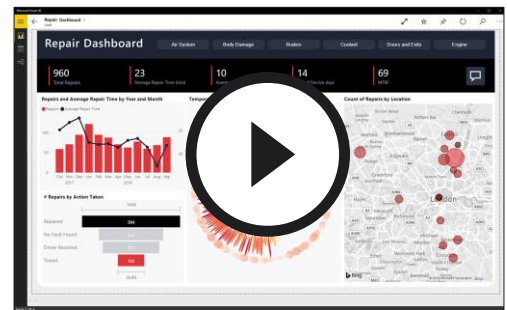
- New experience for report consumption
- Home customization
- Mobile Home

For Power BI administrators

End-user impacting features should be reviewed by Power BI administrators. This facilitates release change management and enables successful onboarding of new capabilities released to market. Look for all features tagged "End users, automatically" in the [release plan](#).

Watch the release overview video

Get an overview of the new capabilities and enhancements to Power BI.
Visit: aka.ms/ROGPBI19RW2ROV



Read the release plan

Explore the entire set of new capabilities planned for 2019 release wave 2.
Visit: aka.ms/ROGPBI19RW2RP



Onboard new capabilities with confidence

Prepare to onboard the new capabilities in your production deployment by watching the deep-dive video series for Power BI.
Coming soon!



Join the Power BI community

Visit: aka.ms/ROGPBI19RW2UC

Power BI

2019 release wave 2

October 2019-March 2020

New capability highlights

These capabilities outline our commitment to deliver on our roadmap priorities. To learn more about the entire set of capabilities being delivered during this release wave, visit: aka.ms/ROGPBI19RW2RP

Unified platform for enterprise BI

Data protection (Preview)

We're introducing new Data Protection capabilities in Power BI, leveraging Microsoft's leading security solutions for Information Protection and Threat Protection to provide you with greater control and visibility over sensitive data in Power BI.

We've integrated Power BI with Microsoft Information Protection and Microsoft Cloud App Security to empower BI professionals and administrators to:

- Classify and label Power BI dashboards, reports, datasets, and dataflows in Power BI service
- Set label-specific permissions on exported files from Power BI (Excel, PowerPoint and PDF documents).
- Provide oversight to administrators on sensitive data being used in Power BI
- Leveraging Microsoft Cloud App Security - monitor user access and activity, protect data based on real time risk analysis, and set label specific controls.

▶ Watch the overview video: aka.ms/ROGPBI19RW2ROV1

Shared and certified datasets

Using shared and certified datasets an organization can establish authoritative datasets and drive the collaborative use of data. We're updating the capabilities that we shipped as part of the Public Preview to make it easier for both, dataset owners and dataset users, to work with and manage shared datasets. We are also planning to give tenant administrators more possibilities to control how these datasets are being used.

▶ Watch the overview video: aka.ms/ROGPBI19RW2ROV2

Data lineage capabilities (Preview)

BI professionals use Power BI today to build advanced analytical projects spanning numerous data sources, artifacts, and dependencies. Providing insights about the data lineage in these projects is key for shaping efficient work processes and for empowering users to better manage existing dependencies, derive the potential impact of planned changes in a project, and determine data lineage for important business KPIs. Data lineage insights also help BI professionals understand exactly where their data comes from and assess usage on various artifacts, such as popular data sets.

To further empower our Power BI users, we're introducing a new experience for visualizing data lineage between different Power BI artifacts within a workspace and including cross-workspace dependencies. In addition, APIs to extract lineage information will be supported. This new experience makes it possible for Power BI professionals and admins to better understand the relationships between artifacts and more easily manage Power BI projects in their organization.

▶ Watch the overview video: aka.ms/ROGPBI19RW2ROV3

Power BI

2019 release wave 2
 October 2019–March 2020

Open platform connectivity (XMLA read/write) (Preview)

This is a follow-up to our March preview of XMLA read-only support, which allowed third-party BI tools to connect to datasets in Power BI, as well as some performance monitoring solutions. We will be allowing full read/write access to datasets. This opens a huge set of opportunities for additional third-party tool connectivity, to enable scenarios like monitoring, lifecycle management, and debugging.

▶ Watch the overview video: aka.ms/ROGPBI19RW2ROV4

Datasets larger than 10GB in Power BI Premium (Preview)

Power BI datasets can store data in a highly compressed, in-memory cache for optimized query performance. This enables fast user interactivity over large datasets. Until now, datasets in Power BI Premium have been limited to 10 GB after compression. With large models, we will remove this limitation and allow dataset sizes limited only by the capacity size. This will bring Power BI dataset sizes to parity with Azure Analysis Services model sizes.

▶ Watch the overview video: aka.ms/ROGPBI19RW2ROV5

Self-service analytics for everyone

New experience for report consumption

We're updating the consumption experience for reports and dashboards including navigation UI elements. Most Power BI users use one or two reports/dashboards, so we're optimizing the experience for using a single item.

Home customization

We will be enhancing Home in Power BI to make it more customizable:

- **User customization of pinned tiles:** Allowing users to choose which dashboards or reports show up on top of Home for an at-a-glance view of their key metrics.
- **Organizational branding:** Allowing administrators to insert a company logo, change the header color, and add a background cover image on Home to match their corporate brand.
- **Promoted content:** Allowing administrators or designated content creators to promote and set the default recommended content. By setting default content, an organization can ensure that users have a consistent, standardized experience for navigating within the service.
- **Configure learning resources:** Allowing administrators to configure the documentation links in the Learn how to use Power BI section for their tenant.

▶ Watch the overview video: aka.ms/ROGPBI19RW2ROV6

June 10, 2019

Release plan available

Learn about the new capabilities coming in the 2019 release wave 2 (October 2019 – March 2020) across Dynamics 365 and the Power Platform.

October 1, 2019

General availability

Production deployment for 2019 release wave 2, October update begins.

Key milestones

Prepare to onboard the new release update with confidence.

General availability is **October 1st, 2019**.

Power BI

2019 release wave 2
October 2019–March 2020

For Power BI administrators

End-user impacting features to the user experience enabled automatically

End-user impacting features should be reviewed by Power BI administrators. This facilitates release change management and enables successful onboarding of new capabilities released to market. For the complete list, look for all features tagged “End users, automatically” in the release plan.

Features that must be enabled by Power BI administrators

This release wave contains features that must be enabled or configured by administrators, makers, or business analysts to be available for their end users. For the complete list, look for all features tagged “End users by admins, makers, or analysts” in the release plan.

Get the most out of Power BI

Release plan

aka.ms/ROGPBI19RW2RP

View all capabilities included in this release.

Release calendar

aka.ms/ROGPBI19RW2RC

Know important release milestones.

Product releases

aka.ms/ROGPBI19RW2PR

Stay up to date on product updates.

Pricing

aka.ms/ROGPBI19RW2LG

Improve your understanding of how to license Power BI.

User community

aka.ms/ROGPBI19RW2UC

Engage with Power BI experts and peers in the community.

Upcoming events

aka.ms/ROGPBI19RW2E

Find and register for in person events and online webinars.

Product documentation

aka.ms/ROGPBI19RW2PD

Find documentation for Power BI.

Is this guide helpful?



aka.ms/ROG19RW2Feedback